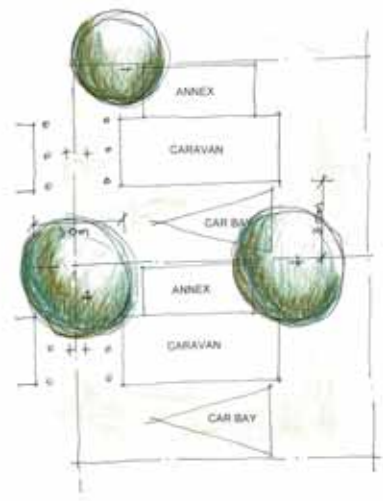


LOCATION PLAN
SCALE 1:2000



TYPICAL CARAVAN SITE
SCALE 1:100



TYPICAL PARK HOME PLAN
SCALE 1:100



TYPICAL PARK HOME ELEVATION
SCALE 1:100

- NOTES**
- Where not indicated setbacks are to comply with the Caravan Parks & Camping Grounds Regulations 1997.
 - All carports / park homes to be setback minimum 5000mm from internal roads.
 - Site Area - 14150m²
Rec. Area - 14150m²
 - Car parking bays are to be a minimum of 5m x 2.5m unless otherwise noted.
 - Access paths max. 1:20 gradient as per AS1428.1.



SITE PLAN
SCALE 1:500