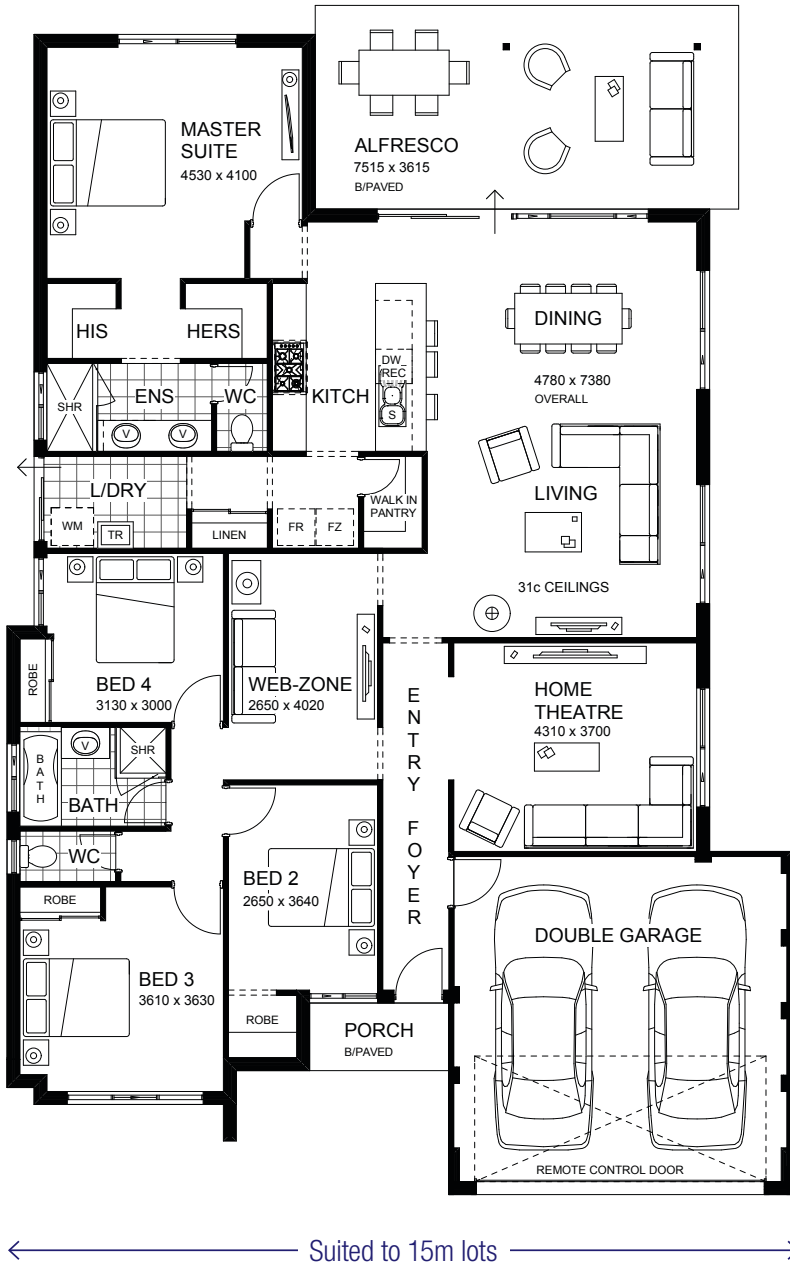




The Byron Bay | 251m<sup>2</sup>

SMALL PRICE...  
**HUGE  
 VALUE!**



**COMPLETE HOME PACKAGE**

**READY TO MOVE IN!**

- Upgrade elevation included
- Large free-form living
- Stylish kitchen/scullery/laundry design
- Massive alfresco living area with high ceilings
- High ceilings to living and dining
- Spacious master suite with his & her robes
- Stone kitchen benchtops
- Deluxe ensuite with double shower & vanities
- Large double slider robes
- Theatre & web zone for the family
- Generous bathroom with oversize bath
- High garage ceiling to suit 4WD and boat
- Much more!

**COMPLETE HOUSE & LAND  
 PACKAGES AT SEAFIELDS  
 ESTATE from just**

**\$381,647\***

**For more information call our office on 9964 5001**

\*Geraldton pricing only. Price subject to location. Images for illustration purposes only. Terms and conditions apply.

the *Better* building experience.

A MEMBER OF THE JWH GROUP BC 11422

**HUMFREY**  
 LAND DEVELOPMENTS

**COUNTRY**  
 BUILDERS