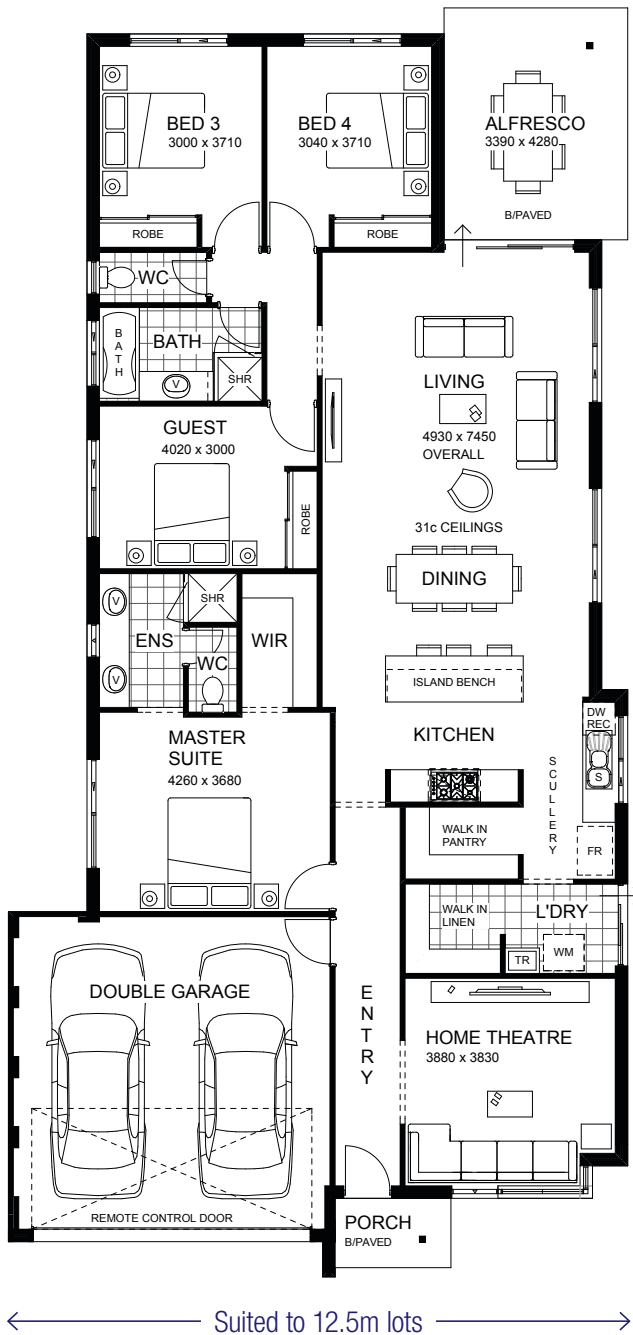




The Melrose | 227m²

SMALL PRICE...
**HUGE
 VALUE!**



COMPLETE HOME PACKAGE

READY TO MOVE IN!

- Big family home for a 12.5m block
- Upgrade elevation included
- Stylish galley kitchen/scullery design
- High ceilings to living, dining, alfresco
- Stone kitchen benchtops
- Deluxe master & ensuite inc double vanities
- Generous bathroom with oversize bath
- Large double slider robes
- Big bedrooms with oversized robes
- High garage ceiling to suit 4WD and boat
- Much more!

**COMPLETE HOUSE & LAND
 PACKAGES AT SEAFIELDS
 ESTATE from just**

\$365,003*

For more information call our office on 9964 5001

*Geraldton pricing only. Price subject to location. Images for illustration purposes only. Terms and conditions apply.

the *Better* building experience.

A MEMBER OF THE JWH GROUP BC 11422

HUMFREY
 LAND DEVELOPMENTS

COUNTRY
 BUILDERS